

STANDART SOMUNLU & LASTİKLİ KELEPÇE				
KOD	ÖLÇÜ	SIKMA ARALIĞI	KOLİ ADET	TL ADET
FRMS SL08-015	1/4"	12-15	300	17,69
FRMS SL08-019	3/8"	15-19	300	17,69
FRMS SL08-024	1/2"	20-24	250	17,69
FRMS SL08-028	3/4"	23-30	200	19,18
FRMS SL08-036	1"	31-36	150	21,50
FRMS SL08-044	1 1/4"	38-44	100	26,09
FRMS SL08-050	1 1/2"	44-53	100	28,44
FRMS SL08-054	54-58		60	31,85
FRMS SL08-065	2"	59-65	60	32,21
FRMS SL10-080	2 1/2"	74-80	70	55,47
FRMS SL10-093	3"	83-93	80	61,38
FRMS SL10-103	95-103		50	70,55
FRMS SL10-118	4"	108-118	50	72,80
FRMS SL10-127	121-127		40	100,08
FRMS SL10-143	5"	132-143	30	103,74
FRMS SL10-165	5 1/2"	150-160	20	119,54
FRMS SL10-169	6"	159-169	20	120,46
FRMS SL10-202	198-202		20	140,62
FRMS SL10-215	210-215		20	148,77
FRMS SL10-225	8"	216-225	20	150,73
FRMS SL10-254	249-254		40	261,33

KOMBİ SOMUNLU & LASTİKLİ KELEPÇE				
KOD	ÖLÇÜ	SIKMA ARALIĞI	KOLİ ADET	TL ADET
FRMS CSL-015	1/4"	12-15	250	22,59
FRMS CSL-019	3/8"	15-19	250	22,59
FRMS CSL-024	1/2"	20-24	200	22,59
FRMS CSL-028	3/4"	23-30	150	24,22
FRMS CSL-036	1"	31-36	125	26,26
FRMS CSL-044	1 1/4"	38-44	100	31,64
FRMS CSL-050	1 1/2"	44-53	75	33,59
FRMS CSL-054	54-58		60	37,45
FRMS CSL-065	2"	59-65	60	37,61
FRMS CSL-080	2 1/2"	74-80	70	58,56
FRMS CSL-093	3"	83-93	80	64,97
FRMS CSL-103	95-103		50	75,84
FRMS CSL-118	4"	108-118	50	77,14
FRMS CSL-127	121-127		40	106,27
FRMS CSL-143	5"	132-143	30	108,79
FRMS CSL-165	5 1/2"	150-160	20	125,61
FRMS CSL-169	6"	159-169	20	125,99
FRMS CSL-202	198-202		20	154,61
FRMS CSL-215	210-215		20	155,62
FRMS CSL-225	8"	216-225	20	157,67
FRMS CSL-254	249-254		40	273,50

KISA TRİFONLU LASTİKLİ KELEPÇE (M7x70)				
KOD	ÖLÇÜ	SIKMA ARALIĞI	KOLİ ADET	TL ADET
FRMKTL-019	3/8"	15-19	150	19,28
FRMKTL-024	1/2"	20-24	150	19,82
FRMKTL-028	3/4"	23-30	150	21,43
FRMKTL-036	1"	31-36	100	23,20
FRMKTL-044	1 1/4"	38-44	75	28,73
FRMKTL-050	1 1/2"	44-53	125	31,05
FRMKTL-065	2"	59-65	100	34,79
FRMKTL-080	2 1/2"	74-80	75	56,56
FRMKTL-093	3"	83-93	60	63,62
FRMKTL-103	95-103		30	71,65
FRMKTL-118	4"	108-118	50	77,54
FRMKTL-127	121-127		35	102,14
FRMKTL-143	5"	132-143	25	113,06
FRMKTL-165	5 1/2"	150-160	20	123,60
FRMKTL-169	6"	159-169	20	130,95

UZUN TRİFONLU LASTİKLİ KELEPÇE (M7x100)				
KOD	ÖLÇÜ	SIKMA ARALIĞI	KOLİ ADET	TL ADET
FRMUTL-019	3/8"	15-19	150	22,41
FRMUTL-024	1/2"	20-24	150	22,41
FRMUTL-028	3/4"	23-30	100	24,02
FRMUTL-036	1"	31-36	100	25,76
FRMUTL-044	1 1/4"	38-44	75	31,79
FRMUTL-050	1 1/2"	44-53	125	33,91
FRMUTL-065	2"	59-65	100	38,67
FRMUTL-080	2 1/2"	74-80	75	59,84
FRMUTL-093	3"	83-93	60	74,37
FRMUTL-103	95-103		40	74,99
FRMUTL-118	4"	108-118	50	81,71
FRMUTL-127	121-127		35	104,99
FRMUTL-143	5"	132-143	25	118,68
FRMUTL-165	5 1/2"	150-160	20	125,81
FRMUTL-169	6"	159-169	20	132,08



AĞIR YÜK KAFALI KELEPÇE EKONOMİK MODEL				
KOD	ÖLÇÜ	SIKMA ARALIĞI	KOLİ ADET	TL ADET
FRMHDE BTL-024	1/2"	20-24	75	60,11
FRMHDE BTL-028	3/4"	23-38	75	63,33
FRMHDE BTL-036	1"	31-36	60	67,75
FRMHDE BTL-044	1 1/4"	38-44	50	73,19
FRMHDE BTL-053	1 1/2"	48-53	50	78,95
FRMHDE BTL-059	53-59		50	82,87
FRMHDE BTL-066	2"	59-66	50	84,92
FRMHDE BTL-080	2 1/2"	74-80	35	93,99
FRMHDE BTL-088	80-88		35	98,30
FRMHDE BTL-094	3"	87-94	35	99,72
FRMHDE BTL-099	99-108		40	134,63
FRMHDE BTL-116	4"	108-116	40	146,86
FRMHDE BTL-133	4 1/2"	125-133	40	208,71
FRMHDE BTL-143	5"	135-143	25	228,45
FRMHDE BTL-156	156-162		30	234,16
FRMHDE BTL-168	6"	162-168	20	248,93
FRMHDE BTL-210	200-210		25	316,15
FRMHDE BTL-220	8"	212-222	15	345,89
FRMHDE BTL-274	10"	270-280	15	429,40
FRMHDE BTL-324	12"	315-326	8	760,82

AĞIR YÜK SOMUNLU KELEPÇE EKONOMİK MODEL				
KOD	ÖLÇÜ	SIKMA ARALIĞI	KOLİ ADET	TL ADET
FRMHDE SL12-024	1/2"	20-24	75	56,47
FRMHDE SL12-028	3/4"	23-38	75	59,16
FRMHDE SL12-036	1"	31-36	60	64,14
FRMHDE SL12-044	1 1/4"	38-44	60	69,53
FRMHDE SL12-053	1 1/2"	48-53	50	75,37
FRMHDE SL12-059	53-59		75	80,00
FRMHDE SL12-066	2"	59-66	50	80,97
FRMHDE SL12-080	2 1/2"	74-80	35	89,51
FRMHDE SL12-088	80-88		40	94,46
FRMHDE SL12-094	3"	87-94	35	95,67
FRMHDE SL12-099	99-108		40	127,55
FRMHDE SL12-116	4"	108-116	30	135,48
FRMHDE SL12-133	4 1/2"	125-133	50	203,10
FRMHDE SL16-143	5"	135-143	25	222,22
FRMHDE SL16-156	156-162		30	227,72
FRMHDE SL16-168	6"	162-168	20	242,37
FRMHDE SL16-210	200-210		25	314,16
FRMHDE SL16-220	8"	212-222	15	336,60
FRMHDE SL16-274	10"	270-280	15	410,60
FRMHDE SL16-324	12"	315-326	8	730,87

SPRİNKLER KELEPÇE				
KOD	ÖLÇÜ	Ø (MM)	KOLİ ADET	TL ADET
FRMSP015	1/2"	28	150	13,49
FRMSP020	3/4"	30	125	14,32
FRMSP025	1"	36	100	15,21
FRMSP032	1 1/4"	46	80	20,81
FRMSP040	1 1/2"	52	50	21,62
FRMSP050	2"	66	50	24,61
FRMSP065	2 1/2"	78	35	37,55
FRMSP080	3"	92	30	42,83
FRMSP100	4"	116	25	64,40
FRMSP125	5"	142	25	90,24
FRMSP150	6"	170	25	104,97
FRMSP200	8"	222	20	245,50
FRMSP250	10"	275	10	291,49

KARE KELEPÇE			
KOD		KOLİ ADET	TL ADET
FRMSQT100	Trifonlu	25	44,53
FRMSQ100	Trifonsuz	75	24,88

SOLAR KELEPÇE			
KOD	ÖLÇÜ	KOLİ ADET	TL ADET
FRMSOK3894	38x94	75	66,36
FRMSOK44115	44x115	60	79,80
FRMSOK48125	48x125	50	90,77

TRİFON ADAPTÖRÜ			
KOD	ÖLÇÜ	KOLİ ADET	TL ADET
FRMTA08080	M8x80	1000	5,20
FRMTA08100	M8x100	1000	6,50
FRMTA08120	M8x120	1000	8,15
FRMTA10100	M10x100	500	8,50
FRMTA10120	M10x120	500	9,80
FRMTA10150	M10x150	500	17,20



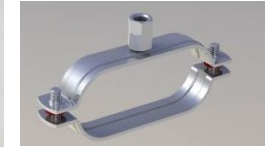
FİYAT LİSTESİ - ŞUBAT 2026

FORMFIX® Teknik Bağlantı Elemanları San. ve Tic. A.Ş.

TSEK



ISO 9001:2015



Fiyatlarımıza KDV dahil değildir.
İskonto oranlarımız sipariş miktarına göre değişmektedir.